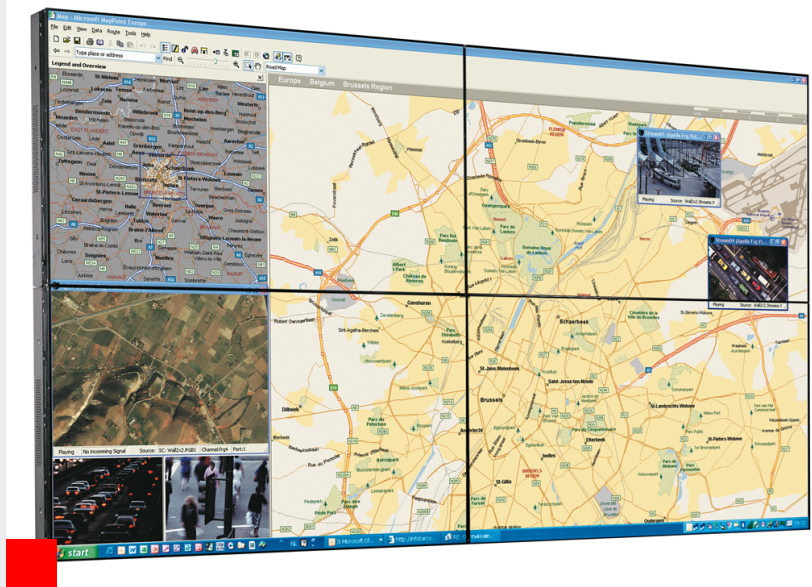


OverView NSL-5521

55" Near-seamless LCD video walls



The OverView NSL-5521 55" tiled LCD video wall uses durable LED backlights positioned directly behind the LCD panel and has a super narrow bezel, resulting in excellent tiled visual performance. This video wall series was designed for 24/7 use in control rooms. Its deep dark levels are perfect for visualizing data-driven information, including process control schematics. Furthermore, the OverView NSL-5521's exceptionally high brightness levels also allow these video walls to be used in any lighting condition.

Durable and bright

These tiled LCD video walls offer the best image quality around in terms of resolution, brightness and viewing angle. Because LED backlights reduce burn-in and colorations in the LCD filters and polarizers, the OverView NSL-5521 has a long panel life.

Ideal for:

- Emergency Operations Centers
- Traffic management and surveillance centers
- C4I-SR environments
- Utilities and process control centers
- Broadcast & telecom monitoring

BARCO

Visibly yours

Product specifications

OverView NSL-5521

LCD technology	S-PVA, normally black,DID technology for extensive usage,AIR Anti Image Retention circuitry
Resolution	Full HD (1920 x 1080)
Backlight	Direct LED
Aspect ratio	16:9
Pixel density	40 dpi
Refresh rate	60 Hz
Luminance	700 cd/m ² (typ)
Contrast	3500:1 (typ.)
Viewing angle	H 178° V 178°
White point	10,000 K
Color	10 bits - 1.07 B colors
Precision	Internal 10 bit processing for precise color calibration
Backlight lifetime	60,000 h (typ)
MTBF	100,000 h (half brightness)
Active screen diagonal	55" (1396 mm)
Dimensions	1215.3 x 686.1 x 98.2 mm 47.85" x 27.01" x 3.87"
Active screen area	1210 mm x 680 mm 47.63" x 26.79"
Bezel width	Right, bottom: 1.9 mm 0.075" Left, top: 3.8 mm 0.15"
Weight	35 77.3 lbs(net)48.5 107.1 lbs (gross)
Cooling	Low noise fans
AC input voltage	100-240 VAC, 60-50 Hz
Power consumption	300 W (max), 130 W (typ), 20 W (sleep), 2.5 W (stdby)
Heat dissipation	1023 BTU/h (max)
VGA	Separate sync DSUB-15P in/out
DVI	Single link DVI-D in/out with HDCP
Display port	Display port input (Out via DVI)
HDMI	HDMI Type A with HDCP (Out via DVI)
CVBS	BNC in/out
S-video	Mini-DIN S-terminal in/out
Barco Wall Control Manager	Server connected via RS232 chain Remote client application: on/off, wall setup, source selection, status, brightness, contrast and color adjustments
Component video	3xBNC in/out
Control signal	RS-232 DSUB9 PIN in/out
Operating humidity	20-80% non-condensing
Operational temperature	0-40°C
Storage humidity	10-90% non-condensing
Storage temperature	-20-60°C
Safety	UL / c_UL / CB / TUV / KCC
EMI / EMC	EMC / IEC / FCC / CE / KCC

Last updated: 13 jul 2015
Technical specifications are subject to change without prior notice.
Please check www.barco.com for the latest information.

BARCO

Visibly yours